



## TĪMATATANGA WAWE

Kapea te pūmanawa **exe**, whakamahia, kātahi, ka whakamōhio mai ki a mātou ki ōu ake whakaaro.

Ko ngā pūmanawa **exe** kua rite mō te Windows XP me te Linux. Ka haere mai tonu ngā pūmanawa pai mō te Mac OS X.

Tīmatahia te kape whakatakotoranga ki te Eduforge:

<http://eduforge.org/projects/exe>

Mō ngā tohutohu whakatakoto, tītiro ki a Installation ki roto i te User Manual kei:

<http://exelearning.org/>

## MĒ PĒHEA TE WHAI KOHA

- Whakauru mai i te kaupapa ki Eduforge - <http://eduforge.org/projects/exe>
- Whakahoki kōrero e pā ana ki ngā painga, ki ngā hēnga me ōu whakaaro kia whai hua i te whakatepe o te puka tiro whānui ki [http://exelearning.org/exe\\_survey/](http://exelearning.org/exe_survey/)
- Aromātai ngā puka āwhina o te mahi whakaako i ngā iDevices, ā, whakamōhio mai ki a mātou, me pēhea te whakapai ake
- Tukuna mai ngā whakaaro mō te whakawhanaketanga o te iDevice
- Whakaatu mai ki a mātou ngā ngārara nāu i hura ake.
- Whakatau mai i ngā ahuatanga mahi whakapai ake

Mena he take tāu, he whakaaro mō te iDevice, he whakawhiti kōrero rānei, pā atu ki te pae whakaata kaupapa: <http://exelearning.org>

The University of Auckland  
Centre for Flexible and Distance Learning  
Level 4, Fisher Bldg,  
18 Waterloo Quadrant, Auckland  
Private Bag 92019, Auckland,  
New Zealand

Phone: 64 9 373 7999  
Fax: 64 9 373 7940  
Website: <http://exelearning.org/>  
Email: [exe@exelearning.org](mailto:exe@exelearning.org)



## TE ĒTITA XHTML A eAKO

HE MĀTĀPUNA WHERAWHERA  
PŪTAKE PŪMANAWA

Pae whakaata o te kaupapa exe -  
<http://exelearning.org>

IMĒRA O TE RŌPŪ WHAKATUPU  
[exe@exelearning.org](mailto:exe@exelearning.org)

NĀ TE AMORANGI MĀTAURANGA MATUA  
O AOTEAROA I WHAKAPAU PŪTEA MŌ  
TĒNEI KAUPAPA



## KO TE WHAKAURU A exe

Ko te kaupapa ētita XHTML a e-ako (exe) he momo papa mahi hei āwhina i ngā kaiwhakaako me ngā kaimātau, ki te whakaputa i te pae whakaata ki te kore he tohunga ki HTML me XML. Kāhore te exe i te pūnaha ako tumu whakahaere, engari, he wāhi hanga pae whakaata mo ngā kaupapa e-akona.

Ki te exe ka taea e ngā kaiwhakamahi te whakawhanake ngā hanganga akoranga e tau ana i ō rātou hiahia mō te whakaaturanga o ngā marau, ā, ka hanga rauemi e pīngore ana, e ngāwari ana ki te whakahou.

Ko ngā whāinga o te kaupapa exe ko te whakatairangi ohi whanaketanga. Ka tōtikahia e ngā ara rautaki me ngā kupu tonoa mā te rōpu kaiwhakamahi hei māngai ki te Amorangi Mātāuranga i Aotearoa (New Zealand).

Ko te exe he momo Mātāpuna Wherawhera Pūtaka Pūmanawa, koia e kiia nei i te tuatahi e kore utu ki te kape iho me te whakamahi, i te tuarua ko te pūtaka ahuatanga mahi e wātea ana mōu, me tō wāhi mahi ki te whakarerekē mō ō koutou hiahia. E manawa ana te rōpū whakawhanake ki ērā pāti e kaingākau ana ki te kōkohunga whakaaro, mai ngā rōpū whakahaere katoa; tirohia e te whārangī whakamuri o tēnei puka whakamōhio mō ngā ara tika hei tautokotia e te whanaketanga o tēnei kaupapa.

## KO TE WHANAKETANGA O

E māmā ana ki te whakawhanake ngā kaupapa mai i te exe

Kua wetewetea e te exe ngā wāhanga mahi e rua: ko te Paetaha me te Pihanga Auaha Ētita. Tō te Paetaha ko ngā pihanga e rua: te pihanga Whakamārama, koia kia whakawhanake tuara mō tō kaupapa; te pihanga i Device (he mea tohutohu) i Devices Kia kawea ngā momo paerewa. iDevices ko ngā mea hanganga tuhi i ngā kaupapa akoranga, pēra i ngā whāinga, i ngā pātaitai whakapūmahara, ara, ara.

Whakamahi i te pihanga Whakamārama kia hanganga he paku kōrero o ngā hua o roto te tāpiritanga o ngā kōwae, o ngā wāhanga me ngā aronui. Ka taea e koe te hanga i tēnei 'taxonomy' mōu ake me ōu hiahia. Mena ka tīpakohia he iDevice, ka tāpiria he iDevice e tahanga ana ki roto i te pihanga Whakamana Tangata, ā, kei reira puta mai ana ngā hua. Kei tētehi rauemi akoranga pea, ko ngā rahi, ngā iti rānei o ngā iDevices kia pai haere te whakaatuhia ngā kaupapa akoranga.

He māmā noa iho te tareka atu o tētehi ētita iDevice mai i te rārangi tonu Tools. Mā tēnei, ka taea e koe te hanga ngā iDevices mō te whakamahi anō mōu ake ki roto i tō wāhi mahi.

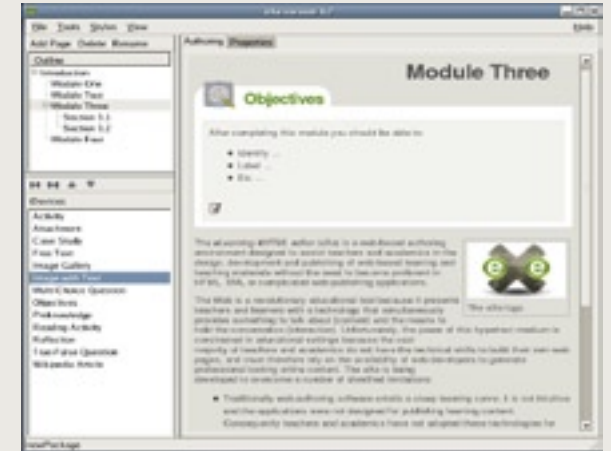
## KO TE WHAKAPUTAINA O

Ka taea te whakatā i aua kaupapa kua whakawhanake a exe mai i ngā tū āhua maha:

He pae tukutuku tū motuhake - ka taea te kawea ake tēnei ki runga i te pae tūmau me te hononga ki tō LMS, ka horahia rānei ki runga i te kōpae pūoro, aha, aha. Kei roto i te pae tūmau he ara whakarauapapa ngā whanaketanga i te wā o te auaha ētita.

SCORM 1.2 - Ko te kawea ake Shareable Content Object Reference Model (SCORM), koia ka hanganga iho i ngā mōkihi kaupapa SCORM 1.2. Ka taea e ngā mōkihi SCORM te whakauru i ngā LMS me te Learning Object Repository e tau ana. Ko te SCORM he whakatakotoranga-a-Ao whānui mo te whakapouaka o ngā kaupapa akoranga.

Ko te Mōkihi o te Kaupapa IMS - koia he momo pūhera kaupapa e tau ana ki ngā tū āhua.



exe Momo Auaha Ētita



exe Kaupapa Whakaputaina